

# OPTIMAX EYE SPECIALIST

New Vision New Life™

## Implantable Collamer Lens (ICL)



The New HD Vision

## What is Implantable Collamer Lens (ICL)?

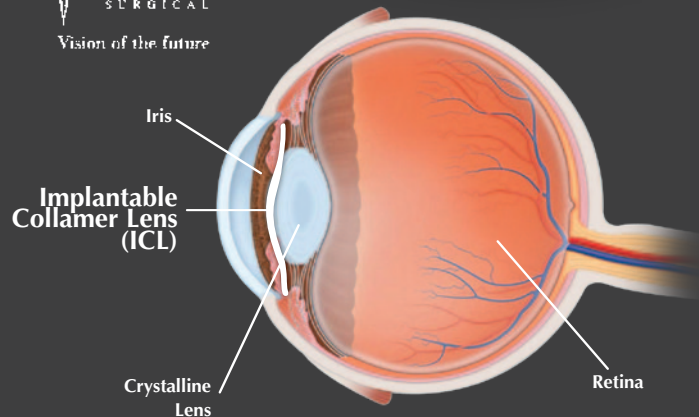
ICL is a special lens that is implanted in the eye between the iris and the natural lens to give you crystal clear vision. ICL is an excellent option for those with severe short/long-sightedness and astigmatism. It is a technologically advanced vision correction for people who expect high quality results. Once implanted, the lens stay indefinitely. The collagen base in collamer material makes ICL biocompatible with the eye.

### How Long Does The Procedure Take, Is It Safe ?

ICL is an outpatient procedure that only will take our surgeon approximately 8-10 mins per eye. With more than 200,000 ICL implanted around the world since 1997, the ICL has an excellent safety profile compare to other procedures.



Vision of the future



# Advantages Of ICL

## High Quality Of Vision

A new level of "high definition vision" that is sharper, clearer and more vivid, alongside greater depth and dimension.

## The Wow Factor

Experience immediate improvement in vision quality and be surprised by the results.

## Permanent, Yet Removable

ICL is designed to be permanently placed inside your eye to correct the vision. One of the most important advantages of the lens is that it can be easily removed or replaced if necessary.

## Short Recovery Time

The recovery period is short and pain-free. Most people recover within a day or less.

## Invisible And Undetectable

ICL is positioned between the iris and natural lens, thus it is invisible to yourself and others. You will neither see nor feel the lens.

## UV Protection

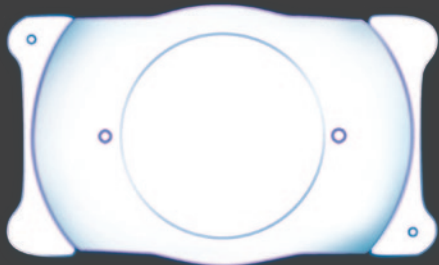
The collamer material of ICL contains UV blockers that prevent harmful UVA and UVB rays from entering the eye, possibly preventing the development of UV related eye disorders such as cataract and retinal problems.

## No Eye Dryness

As it does not cut the edge of the corneal nerve, the ICL procedure does not cause or contribute to dry eyes.

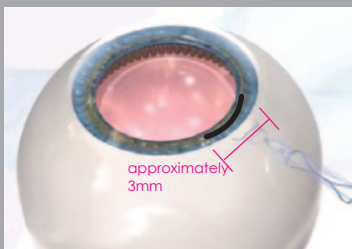
## Treatment Flexibility For The Future

As ICL is removable in the future, it allows you to have more options for other eye surgeries.



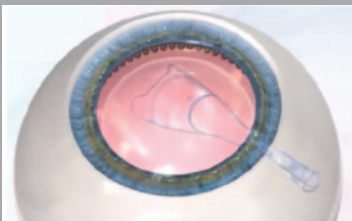
# ICL Procedure

Step  
1



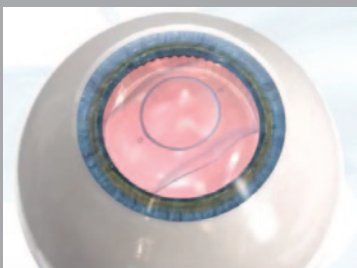
Micro incision of less than 3mm is made

Step  
2



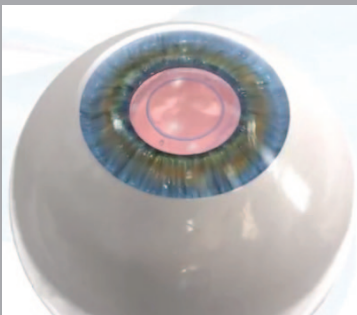
ICL is injected behind the iris

Step  
3



Slight adjustment

Step  
4



Normal view of eye after procedure

## The Lens You Can Rely On

A superior technology for super athletes, ICL even meets the demands of the US military. To date, surgeons in the US military have implanted over thousands with ICL. 98% patients achieved 20/20 visual acuity or better, while 100% were able to see, function and perform better than before the surgery.

### Recommended for those who:

- Have a thin cornea
- Demand sharp and vivid vision
- Are aged between 21 to 50
- Have treatment power from hyperopia +10.00 to myopic -19.00
- Have astigmatism up to +6.00

Make an appointment with us to find out whether you are a candidate for ICL! We are always ready to deliver a new vision, a new life. Contact us at

**1800-88-1201**

or email us at  
**hq@optimax.com.my**



# WHY CHOOSE OPTIMAX



## Experience

Since 1995, we are among the professionals to perform Lasik in Malaysia. Today, we boast over 95,000 satisfied clients.



## Modern Technology

From diagnosis equipment to sophisticated laser engineering, modern technologies are used.



## Total Convenience

With a comprehensive network covering most cities in Malaysia, customers can keep in touch with us more easily.



## ISO Certified

We are a corporation in Malaysia providing world-class Lasik services that fulfil stringent ISO requirements.



## Trusted Team of Professionals

We are occupied with a resident multi-specialty Ophthalmologist, practicing Optometrist, Vision Consultant, Nurses and Laser Engineer.



## Life Time Warranty

Our Vision For Life program warrants your Lasik vision for a lifetime.\*



## HPMRS

All our Lasik procedures achieved results of 99% in functional visual acuity and 100% in safety tests audited by the Healthcare Performance Measurement Report System (HPMRS).\*\*

\*Terms and conditions apply

\*\*Audited by third party

# OPTIMAX EYE SPECIALIST

New Vision New Life™

**OPTIMAX EYE SPECIALIST CENTRE SDN BHD**  
(329776-D)

### TAMAN TUN DR. ISMAIL (HQ)

Unit 2-2-1, Bangunan AHP, Jalan Tun Mohd Fuad 3,  
Taman Tun Dr Ismail, 60000 Kuala Lumpur.

Tel: 03-7722 3177 / 03-7728 3177

**KLANG** +603-3323 7742

**SHAH ALAM** +603-5510 2535

**SUNWAY** +603-5621 3388

**SRI PETALING** +603-9057 7300

**SEREMBAN** +606-761 0900

**JOHOR** +607-295 2522

**KUCHING** +6082-579 085

# OPTIMAX EYE SPECIALIST HOSPITAL

## OPTIMAX EYE SPECIALIST HOSPITAL (PENANG)

223, Jalan Masjid Negeri, 11600 Penang.

Tel: 04-282 3522 Fax: 04-281 2492

Email: penang@optimax.com.my

Find us at:

**www.optimax2u.com**  
**Toll Free: 1800 88 1201**



*DISCLAIMER: The information in this brochure is not intended to be a substitute for professional medical advice, diagnosis or treatment. All content, including text, graphics, images and information is for general information purposes only. If you have persistent vision health problems or if you have further questions, please consult our ophthalmologists.*

*For internal distributions only.*